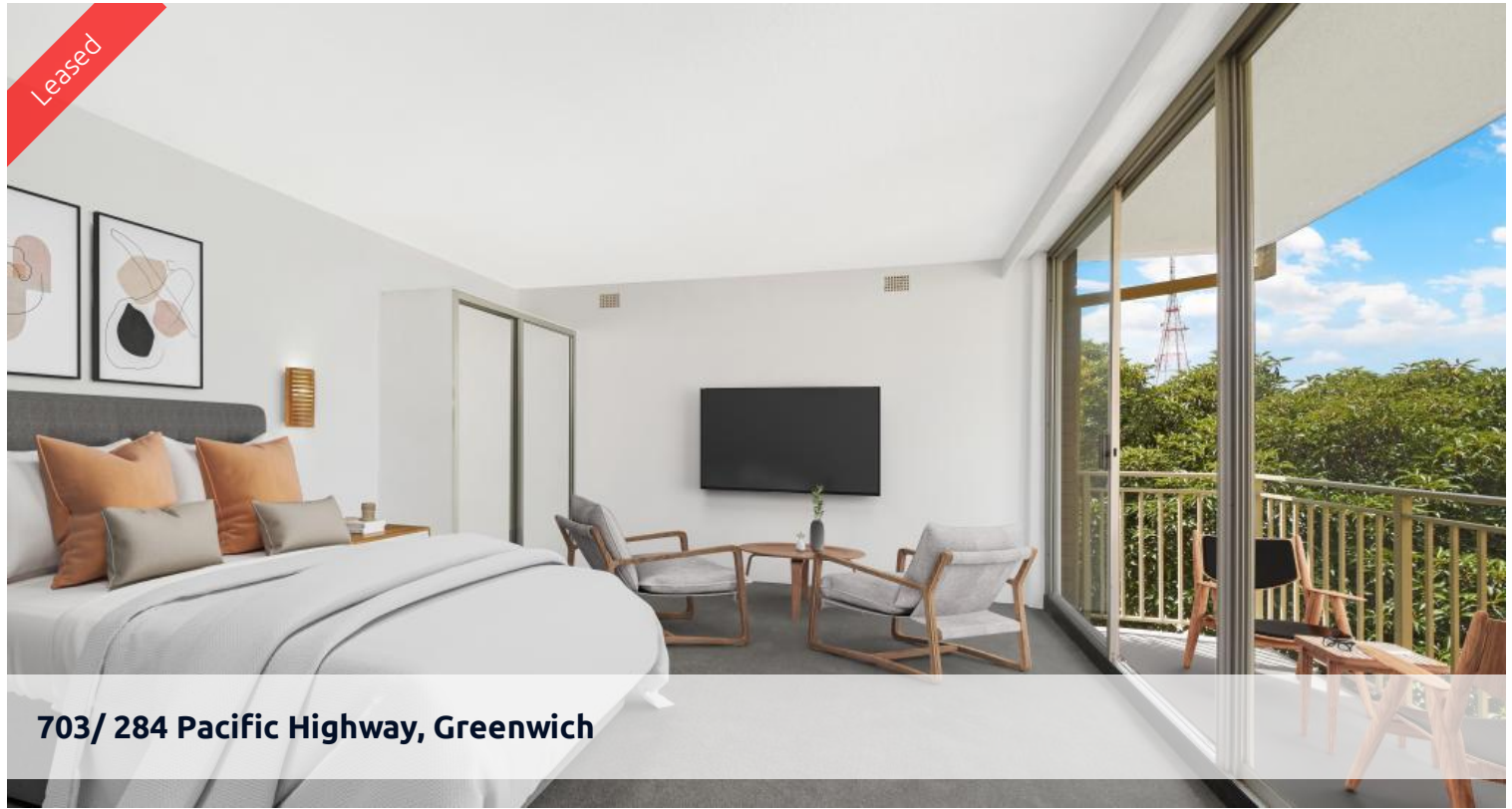


Leased



703/ 284 Pacific Highway, Greenwich



## LEASED BY THE LEADING PROPERTY MANAGERS

This top floor security apartment is perfectly located at the rear of the building. Captivating views across Sydney Harbour and beyond as well as a private leafy setting. Bright and airy upgraded interiors, this apartment is perfectly located only meters to Artarmon and St Leonard's stations and boasting transport links to Sydney CBD, Chatswood and Macquarie Park at the doorstep.

- > Light-filled lounge/bedroom area with mirrored built-in wardrobe
- > Wonderful private outlook with distant Harbour Views
- > Tidy kitchen with ample cupboard space
- > Fully tiled bathroom with vanity and shower
- > Well maintained share laundry facilities
- > Building features includes security intercom and lift access
- > Undercover car space

Central location ensures a lifestyle of absolute convenience.

APPLY: <https://t-app.com.au/cousinsnco>

PLEASE NOTE: You must view the property prior to submitting an application.

The above information provided has been furnished to us by the vendor/s. We have not verified whether or not that information is accurate and do not have any belief in one way or the other in its accuracy. We do not accept any responsibility to any person for its accuracy and do no more than pass it on. All interested parties should make and rely upon their own inquiries in order to determine whether or not this information is in fact accurate.

1 Bed 1 Bath 1 Car

<b>Price</b>	DEPOSIT TAKEN
<b>Property Type</b>	Rental
<b>Property ID</b>	1030

### Agent Details

Rodney Fraser - 0425 287 637

### Office Details

Mosman  
Suite 7, 600 Military Road Mosman  
NSW 2088 Australia  
02 9969 6622



Cousins & Co