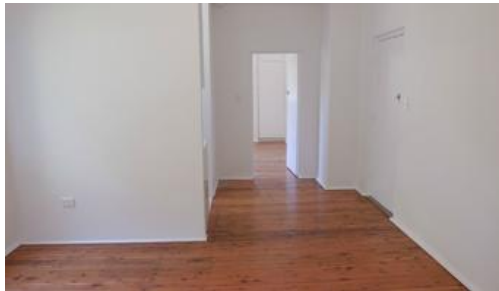


Leased



1/40 Brightmore Street, Cremorne



LEASED BY THE LEADING PROPERTY MANAGERS

Quiet one bedroom apartment with leafy outlook, backing onto Primrose Park in convenient location.

- > Combined lounge/dinning area with polished timber flooring
- > Stylish modern kitchen with the latest appliances & stone bench-tops
- > Double sized bedroom with built in wardrobe
- > Modern bathroom with floor to ceiling tiling & internal laundry facilities

Convenient short stroll to Cremorne/Neutral Bay shops, cafes, restaurants, bars & public transport to the CBD.

The above information provided has been furnished to us by the vendor/s. We have not verified whether or not that information is accurate and do not have any belief in one way or the other in its accuracy. We do not accept any responsibility to any person for its accuracy and do no more than pass it on. All interested parties should make and rely upon their own inquiries in order to determine whether or not this information is in fact accurate.

 1  1

Price	DEPOSIT TAKEN
Property Type	rental
Property ID	775

Agent Details

Rodney Fraser - 0425 287 637

Office Details

Mosman
Suite 7, 600 Military Road Mosman
NSW 2088 Australia
02 9969 6622



Cousins & Co